



Stainless Steel Cast Fittings

150lb 304 & 316 Stainless Steel Cast Fitting List Prices (SSC-0522)


- *Manufactured in ISO9000:2000 Facility*
- *Items Conform to AISI 304 / 316*
- *Investment Cast with Material Test Reports*
- *Stainless Steel Fittings are Lot -Traceable*
- *SP114 Stainless Fittings Available Upon Request*


800-678-2544 • msipvf.com


Prices subject to change without notice



150lb Stainless Steel Cast Fittings - SSC-0522

90° Elbows	Size	Inner Carton	Master Case	304 Item Number	304 List Price	316 Item Number	316 List Price
		1/8"	120	480	A3010002	\$ 13.17	A3210002
	1/4"	80	320	A3010004	\$ 13.17	A3210004	\$ 16.86
	3/8"	50	200	A3010006	\$ 16.35	A3210006	\$ 20.49
	1/2"	30	120	A3010008	\$ 17.39	A3210008	\$ 22.61
	3/4"	18	72	A3010012	\$ 24.96	A3210012	\$ 32.79
	1"	8	32	A3010016	\$ 35.39	A3210016	\$ 41.18
	1-1/4"	5	20	A3010020	\$ 62.11	A3210020	\$ 70.61
	1-1/2"	4	16	A3010024	\$ 82.65	A3210024	\$ 94.16
	2"	2	8	A3010032	\$ 104.79	A3210032	\$ 119.02
	2-1/2"	-	6	A3010040	\$ 238.69	A3210040	\$ 261.51
	3"	-	4	A3010048	\$ 304.16	A3210048	\$ 359.73
	4"	-	2	A3010064	\$ 593.56	A3210064	\$ 661.09


45° Elbows	Size	Inner Carton	Master Case	304 Item Number	304 List Price	316 Item Number	316 List Price
		1/8"	120	480	A3010402	\$ 16.64	A3210402
	1/4"	100	400	A3010404	\$ 16.64	A3210404	\$ 20.08
	3/8"	60	240	A3010406	\$ 19.55	A3210406	\$ 24.53
	1/2"	40	160	A3010408	\$ 21.48	A3210408	\$ 26.93
	3/4"	20	80	A3010412	\$ 31.35	A3210412	\$ 35.36
	1"	10	40	A3010416	\$ 38.29	A3210416	\$ 44.31
	1-1/4"	6	24	A3010420	\$ 61.31	A3210420	\$ 37.90
	1-1/2"	4	16	A3010424	\$ 72.94	A3210424	\$ 82.88
	2"	2	8	A3010432	\$ 102.62	A3210432	\$ 115.87
	2-1/2"	-	8	A3010440	\$ 282.29	A3210440	\$ 303.62
	3"	-	6	A3010448	\$ 389.06	A3210448	\$ 438.25
	4"	-	3	A3010464	\$ 692.37	A3210464	\$ 825.04


90° Street Elbows	Size	Inner Carton	Master Case	304 Item Number	304 List Price	316 Item Number	316 List Price
		1/8"	120	480	A3010602	\$ 18.78	A3210602
	1/4"	100	400	A3010604	\$ 18.78	A3210604	\$ 23.03
	3/8"	60	240	A3010606	\$ 22.61	A3210606	\$ 28.31
	1/2"	35	140	A3010608	\$ 26.61	A3210608	\$ 33.31
	3/4"	18	72	A3010612	\$ 36.93	A3210612	\$ 43.88
	1"	10	40	A3010616	\$ 63.91	A3210616	\$ 70.07
	1-1/4"	5	20	A3010620	\$ 92.82	A3210620	\$ 104.72
	1-1/2"	4	16	A3010624	\$ 109.81	A3210624	\$ 116.64
	2"	2	8	A3010632	\$ 148.73	A3210632	\$ 166.60
	2-1/2"	-	8	A3010640	\$ 314.10	A3210640	\$ 388.53
	3"	-	4	A3010648	\$ 416.68	A3210648	\$ 503.57
	4"	-	2	A3010664	\$ 811.30	A3210664	\$ 994.48


MSI 150lb Stainless Cast Fittings are fully-traceable, conform to AISI 304/316 ; Threads conform to ASME B1.20.1
 SSP114 Fittings also available / msi-products.com Illinois / Texas



150lb Stainless Steel Cast Fittings - SSC-0522

Unions	Size	Inner Carton	Master Case	304 Item Number	304 List Price	316 Item Number	316 List Price
	1/8"	50	200	A3040802	\$ 44.42	A3240802	\$ 50.40
	1/4"	45	180	A3040804	\$ 44.42	A3240804	\$ 50.40
	3/8"	35	140	A3040806	\$ 45.27	A3240806	\$ 51.27
	1/2"	25	100	A3040808	\$ 49.00	A3240808	\$ 55.68
	3/4"	12	48	A3040812	\$ 62.11	A3240812	\$ 70.62
	1"	10	40	A3040816	\$ 93.66	A3240816	\$ 106.58
	1-1/4"	3	12	A3040820	\$ 162.45	A3240820	\$ 184.29
	1-1/2"	2	8	A3040824	\$ 183.75	A3240824	\$ 209.17
	2"	2	8	A3040832	\$ 219.99	A3240832	\$ 249.45
	2-1/2"	-	8	A3040840	\$ 595.80	A3240840	\$ 641.08
	3"	-	6	A3040848	\$ 750.32	A3240848	\$ 891.39
4"	-	2	A3040864	\$ 1,217.86	A3240864	\$ 1,518.51	


Tees	Size	Inner Carton	Master Case	304 Item Number	304 List Price	316 Item Number	316 List Price
	1/8"	75	300	A3020002	\$ 17.64	A3220002	\$ 20.97
	1/4"	60	240	A3020004	\$ 17.64	A3220004	\$ 20.97
	3/8"	40	160	A3020006	\$ 22.48	A3220006	\$ 27.78
	1/2"	20	80	A3020008	\$ 23.60	A3220008	\$ 29.31
	3/4"	12	48	A3020012	\$ 37.56	A3220012	\$ 43.24
	1"	8	32	A3020016	\$ 47.82	A3220016	\$ 54.26
	1-1/4"	-	26	A3020020	\$ 95.11	A3220020	\$ 108.00
	1-1/2"	-	18	A3020024	\$ 118.22	A3220024	\$ 131.05
	2"	-	8	A3020032	\$ 151.88	A3220032	\$ 168.84
	2-1/2"	-	5	A3020040	\$ 325.71	A3220040	\$ 394.69
3"	-	4	A3020048	\$ 469.42	A3220048	\$ 563.36	
4"	-	2	A3020064	\$ 847.84	A3220064	\$ 917.82	


Crosses	Size	Inner Carton	Master Case	304 Item Number	304 List Price	316 Item Number	316 List Price
	1/8"	50	200	A3030202	\$ 30.71	A3230202	\$ 37.92
	1/4"	50	200	A3030204	\$ 30.71	A3230204	\$ 37.92
	3/8"	30	120	A3030206	\$ 36.60	A3230206	\$ 44.62
	1/2"	15	60	A3030208	\$ 45.08	A3230208	\$ 55.37
	3/4"	8	32	A3030212	\$ 77.14	A3230212	\$ 96.74
	1"	5	20	A3030216	\$ 114.15	A3230216	\$ 116.76
	1-1/4"	3	12	A3030220	\$ 135.55	A3230220	\$ 168.84
	1-1/2"	2	8	A3030224	\$ 167.91	A3230224	\$ 210.72
	2"	-	9	A3030232	\$ 240.40	A3230232	\$ 290.29
	2-1/2"	-	4	A3030240	\$ 690.78	A3230240	\$ 819.41
	3"	-	2	A3030248	\$ 746.26	A3230248	\$ 892.42
4"	-	1	A3030264	\$ 1,212.35	A3230264	\$ 1,446.04	


MSI 150lb Stainless Cast Fittings are fully-traceable, conform to AISI 304/316 ; Threads conform to ASME B1.20.1
 SSP114 Fittings also available / msi-products.com Illinois / Texas



150lb Stainless Steel Cast Fittings - SSC-0522

NPSL Locknuts		Size	Inner Carton	Master Case	304 Item Number	304 List Price	316 Item Number	316 List Price
		1/8"	300	1200	A3040602	\$ 27.03	A3240602	\$ 29.50
		1/4"	200	800	A3040604	\$ 27.03	A3240604	\$ 29.50
		3/8"	125	500	A3040606	\$ 27.03	A3240606	\$ 29.50
		1/2"	100	400	A3040608	\$ 27.03	A3240608	\$ 29.50
		3/4"	90	360	A3040612	\$ 32.98	A3240612	\$ 37.03
		1"	50	200	A3040616	\$ 37.41	A3240616	\$ 41.58
		1-1/4"	40	160	A3040620	\$ 77.39	A3240620	\$ 84.25
		1-1/2"	25	100	A3040624	\$ 77.44	A3240624	\$ 84.25
		2"	-	75	A3040632	\$ 85.19	A3240632	\$ 92.44
		2-1/2"	-	50	A3040640	\$ 107.69	A3240640	\$ 118.58
		3"	-	35	A3040648	\$ 136.73	A3240648	\$ 145.72
	4"	-	25	A3040664	\$ 195.98	A3240664	\$ 234.48	

Full Couplings		Size	Inner Carton	Master Case	304 Item Number	304 List Price	316 Item Number	316 List Price
		1/8"	200	800	A3030402	\$ 10.01	A3230402	\$ 12.70
		1/4"	120	480	A3030404	\$ 11.86	A3230404	\$ 12.70
		3/8"	100	400	A3030406	\$ 13.82	A3230406	\$ 14.90
		1/2"	60	240	A3030408	\$ 19.59	A3230408	\$ 21.76
		3/4"	36	144	A3030412	\$ 28.28	A3230412	\$ 31.45
		1"	18	72	A3030416	\$ 42.94	A3230416	\$ 46.84
		1-1/4"	12	48	A3030420	\$ 68.27	A3230420	\$ 74.50
		1-1/2"	12	48	A3030424	\$ 81.04	A3230424	\$ 88.52
		2"	4	16	A3030432	\$ 114.23	A3230432	\$ 124.63
		2-1/2"	-	10	A3030440	\$ 250.76	A3230440	\$ 292.78
		3"	-	6	A3030448	\$ 324.16	A3230448	\$ 378.22
	4"	-	4	A3030464	\$ 503.87	A3230464	\$ 584.07	

Half Couplings		Size	Inner Carton	Master Case	304 Item Number	304 List Price	316 Item Number	316 List Price
		1/8"	300	1200	A3030602	\$ 7.19	A3230602	\$ 8.07
		1/4"	250	1000	A3030604	\$ 7.96	A3230604	\$ 8.07
		3/8"	200	800	A3030606	\$ 8.59	A3230606	\$ 9.39
		1/2"	120	480	A3030608	\$ 11.97	A3230608	\$ 13.68
		3/4"	70	280	A3030612	\$ 15.97	A3230612	\$ 17.44
		1"	40	160	A3030616	\$ 20.50	A3230616	\$ 26.50
		1-1/4"	24	96	A3030620	\$ 33.45	A3230620	\$ 40.17
		1-1/2"	20	80	A3030624	\$ 42.89	A3230624	\$ 53.47
		2"	8	32	A3030632	\$ 58.79	A3230632	\$ 69.97
		2-1/2"	-	23	A3030640	\$ 142.62	A3230640	\$ 167.12
		3"	-	14	A3030648	\$ 196.11	A3230648	\$ 227.70
	4"	-	12	A3030664	\$ 320.51	A3230664	\$ 374.59	

MSI 150lb Stainless Cast Fittings are fully-traceable, conform to AISI 304/316 ; Threads conform to ASME B1.20.1

SSP114 Fittings also available / msi-products.com Illinois / Texas



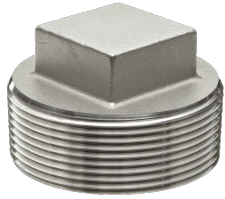
150lb Stainless Steel Cast Fittings - SSC-0522

Hex Bushings	Size	Inner Carton	Master Case	304 Item Number	304 List Price	316 Item Number	316 List Price
	1/4" x 1/8"	300	1200	A304000402	\$ 8.59	A324000402	\$ 9.68
	3/8" x 1/8"	200	800	A304000602	\$ 9.37	A324000602	\$ 11.05
	3/8" x 1/4"	200	800	A304000604	\$ 9.37	A324000604	\$ 11.05
	1/2" x 1/8"	120	480	A304000802	\$ 11.86	A324000802	\$ 12.96
	1/2" x 1/4"	120	480	A304000804	\$ 11.86	A324000804	\$ 12.96
	1/2" x 3/8"	120	480	A304000806	\$ 11.86	A324000806	\$ 12.96
	3/4" x 1/8"	70	280	A304001202	\$ 17.35	A324001202	\$ 19.27
	3/4" x 1/4"	70	280	A304001204	\$ 17.35	A324001204	\$ 19.27
	3/4" x 3/8"	70	280	A304001206	\$ 17.35	A324001206	\$ 19.27
	3/4" x 1/2"	70	280	A304001208	\$ 17.35	A324001208	\$ 19.27
	1" x 1/8"	40	160	A304001602	\$ 24.12	A324001602	\$ 27.54
	1" x 1/4"	40	160	A304001604	\$ 24.12	A324001604	\$ 27.54
	1" x 3/8"	40	160	A304001606	\$ 24.12	A324001606	\$ 27.54
	1" x 1/2"	40	160	A304001608	\$ 24.12	A324001608	\$ 27.54
	1" x 3/4"	40	160	A304001612	\$ 24.12	A324001612	\$ 27.54
	1 1/4" x 1/8"	18	72	A304002002	\$ 43.13	A324002002	\$ 53.82
	1 1/4" x 1/4"	18	72	A304002004	\$ 43.13	A324002004	\$ 53.82
	1 1/4" x 3/8"	18	72	A304002006	\$ 43.13	A324002006	\$ 53.82
	1 1/4" x 1/2"	18	72	A304002008	\$ 43.13	A324002008	\$ 53.82
	1 1/4" x 3/4"	18	72	A304002012	\$ 43.13	A324002012	\$ 53.82
	1 1/4" x 1"	18	72	A304002016	\$ 43.13	A324002016	\$ 53.82
	1 1/2" x 1/4"	16	64	A304002404	\$ 51.62	A324002404	\$ 63.63
	1 1/2" x 3/8"	16	64	A304002406	\$ 51.62	A324002406	\$ 63.63
	1 1/2" x 1/2"	16	64	A304002408	\$ 51.62	A324002408	\$ 63.63
	1 1/2" x 3/4"	16	64	A304002412	\$ 51.62	A324002412	\$ 63.63
	1 1/2" x 1"	16	64	A304002416	\$ 51.62	A324002416	\$ 63.63
	1 1/2" x 1 1/4"	16	64	A304002420	\$ 51.62	A324002420	\$ 63.63
	2" x 1/8"	9	36	A304003202	\$ 78.73	A324003202	\$ 90.37
	2" x 1/4"	9	36	A304003204	\$ 78.73	A324003204	\$ 90.37
	2" x 3/8"	9	36	A304003206	\$ 78.73	A324003206	\$ 90.37
	2" x 1/2"	9	36	A304003208	\$ 78.73	A324003208	\$ 90.37
	2" x 3/4"	9	36	A304003212	\$ 78.73	A324003212	\$ 90.37
	2" x 1"	9	36	A304003216	\$ 78.73	A324003216	\$ 90.37
	2" x 1 1/4"	9	36	A304003220	\$ 78.73	A324003220	\$ 90.37
	2" x 1 1/2"	9	36	A304003224	\$ 78.73	A324003224	\$ 90.37
	2 1/2" x 1/2"	4	16	A304004008	\$ 134.94	A324004008	\$ 153.54
	2 1/2" x 3/4"	4	16	A304004012	\$ 134.94	A324004012	\$ 153.54
	2 1/2" x 1"	4	16	A304004016	\$ 134.94	A324004016	\$ 153.54
	2 1/2" x 1 1/4"	4	16	A304004020	\$ 134.94	A324004020	\$ 153.54
	2 1/2" x 1 1/2"	4	16	A304004024	\$ 134.94	A324004024	\$ 153.54
	2 1/2" x 2"	4	16	A304004032	\$ 134.94	A324004032	\$ 153.54
	3" x 1"	3	12	A304004816	\$ 206.80	A324004816	\$ 236.08
	3" x 1 1/4"	3	12	A304004820	\$ 206.80	A324004820	\$ 236.08
	3" x 1 1/2"	3	12	A304004824	\$ 206.80	A324004824	\$ 236.08
	3" x 2"	3	12	A304004832	\$ 206.80	A324004832	\$ 236.08
3" x 2 1/2"	3	12	A304004840	\$ 206.80	A324004840	\$ 236.08	
4" x 1-1/4"	-	8	A304006420	\$ 206.80	A324006420	\$ 424.66	
4" x 1-1/2"	-	8	A304006424	\$ 206.80	A324006424	\$ 424.66	
4" x 2"	-	8	A304006432	\$ 206.80	A324006432	\$ 424.66	
4" x 2 1/2"	-	8	A304006440	\$ 376.26	A324006440	\$ 424.66	
4" x 3	-	8	A304006448	\$ 376.26	A324006448	\$ 424.66	



150lb Stainless Steel Cast Fittings - SSC-0522

Square Head Plugs



Size	Inner Carton	Master Case	304 Item Number	304 List Price	316 Item Number	316 List Price
1/8" - Solid	500	2000	A3050102	\$ 5.69	A3250102	\$ 6.13
1/4" - Solid	400	1600	A3050104	\$ 6.73	A3250104	\$ 7.79
3/8" - Solid	200	800	A3050106	\$ 8.99	A3250106	\$ 10.25
1/2"	120	480	A3050008	\$ 12.84	A3250008	\$ 14.49
3/4"	80	320	A3050012	\$ 15.66	A3250012	\$ 17.72
1"	40	160	A3050016	\$ 19.81	A3250016	\$ 22.16
1 1/4"	24	96	A3050020	\$ 39.42	A3250020	\$ 52.37
1 1/2"	20	80	A3050024	\$ 47.03	A3250024	\$ 57.90
2"	10	40	A3050032	\$ 55.65	A3250032	\$ 79.88
2 1/2"	6	24	A3050040	\$ 106.06	A3250040	\$ 128.67
3"	-	12	A3050048	\$ 133.26	A3250048	\$ 156.42
4"	-	12	A3050064	\$ 289.23	A3250064	\$ 342.88

Caps



Size	Inner Carton	Master Case	304 Item Number	304 List Price	316 Item Number	316 List Price
1/8"	300	1200	A3040502	\$ 6.63	A3240502	\$ 8.02
1/4"	200	800	A3040504	\$ 9.49	A3240504	\$ 10.80
3/8"	120	480	A3040506	\$ 11.16	A3240506	\$ 12.75
1/2"	90	360	A3040508	\$ 11.58	A3240508	\$ 14.76
3/4"	50	200	A3040512	\$ 14.49	A3240512	\$ 16.93
1"	25	100	A3040516	\$ 21.79	A3240516	\$ 25.93
1-1/4"	16	64	A3040520	\$ 39.42	A3240520	\$ 50.98
1-1/2"	14	56	A3040524	\$ 51.75	A3240524	\$ 65.37
2"	8	32	A3040532	\$ 66.00	A3240532	\$ 83.68
2-1/2"	-	24	A3040540	\$ 119.01	A3240540	\$ 148.43
3"	-	12	A3040548	\$ 164.53	A3240548	\$ 194.36
4"	-	10	A3040564	\$ 278.50	A3240564	\$ 337.76

Hex Head Plugs



Size	Inner Carton	Master Case	304 Item Number	304 List Price	316 Item Number	316 List Price
1/8" - Solid	400	1600	A3050302	\$ 6.31	A3250302	\$ 7.80
1/4" - Solid	300	1200	A3050304	\$ 6.31	A3250304	\$ 7.80
3/8" - Solid	200	800	A3050306	\$ 7.79	A3250306	\$ 8.81
1/2"	120	480	A3050208	\$ 12.26	A3250208	\$ 14.77
3/4"	60	240	A3050212	\$ 15.42	A3250212	\$ 18.61
1"	35	140	A3050216	\$ 26.62	A3250216	\$ 29.64
1-1/4"	18	72	A3050220	\$ 42.72	A3250220	\$ 51.21
1-1/2"	15	60	A3050224	\$ 46.75	A3250224	\$ 60.62
2"	6	24	A3050232	\$ 64.55	A3250232	\$ 87.46
2-1/2"	4	16	A3050240	\$ 115.73	A3250240	\$ 140.72
3"	-	12	A3050248	\$ 158.78	A3250248	\$ 180.56
4"	-	10	A3050264	\$ 332.29	A3250264	\$ 403.60

MSI 150lb Stainless Cast Fittings are fully-traceable, conform to AISI 304/316 ; Threads conform to ASME B1.20.1
 SSP114 Fittings also available / msi-products.com Illinois / Texas



150lb Stainless Steel Cast Fittings - SSC-0522

Reducer Couplings



Size	Inner Carton	Master Case	304 Item Number	304 List Price	316 Item Number	316 List Price
1/4" x 1/8"	150	600	A303080402	\$ 13.76	A323080402	\$ 15.66
3/8" x 1/8"	100	400	A303080602	\$ 15.27	A323080602	\$ 17.38
3/8" x 1/4"	100	400	A303080604	\$ 15.27	A323080604	\$ 20.85
1/2" x 1/8"	60	240	A303080802	\$ 14.59	A323080802	\$ 20.85
1/2" x 1/4"	60	240	A303080804	\$ 14.59	A323080804	\$ 20.85
1/2" x 3/8"	60	240	A303080806	\$ 14.59	A323080806	\$ 20.85
3/4" x 1/8"	36	144	A303081202	\$ 21.93	A323081202	\$ 26.74
3/4" x 1/4"	36	144	A303081204	\$ 21.93	A323081204	\$ 26.74
3/4" x 3/8"	36	144	A303081206	\$ 21.93	A323081206	\$ 26.74
3/4" x 1/2"	36	144	A303081208	\$ 21.93	A323081208	\$ 26.74
1" x 1/8"	20	80	A303081602	\$ 30.01	A323081602	\$ 44.15
1" x 1/4"	20	80	A303081604	\$ 30.01	A323081604	\$ 44.15
1" x 3/8"	20	80	A303081606	\$ 30.01	A323081606	\$ 44.15
1" x 1/2"	20	80	A303081608	\$ 30.01	A323081608	\$ 44.15
1" x 3/4"	20	80	A303081612	\$ 30.01	A323081612	\$ 44.15
1 1/4" x 3/8"	18	64	A303082006	\$ 43.76	A323082006	\$ 57.62
1 1/4" x 1/2"	18	64	A303082008	\$ 43.76	A323082008	\$ 57.62
1 1/4" x 3/4"	18	64	A303082012	\$ 43.76	A323082012	\$ 57.62
1 1/4" x 1"	18	64	A303082016	\$ 43.76	A323082016	\$ 57.62
1 1/2" x 3/8"	12	48	A303082406	\$ 63.10	A323082406	\$ 76.97
1 1/2" x 1/2"	12	48	A303082408	\$ 63.10	A323082408	\$ 76.97
1 1/2" x 3/4"	12	48	A303082412	\$ 63.10	A323082412	\$ 76.97
1 1/2" x 1"	12	48	A303082416	\$ 63.10	A323082416	\$ 76.97
1 1/2" x 1 1/4"	12	48	A303082420	\$ 63.10	A323082420	\$ 76.97
2" x 1/4"	4	16	A303083204	\$ 105.37	A323083204	\$ 129.82
2" x 3/8"	4	16	A303083206	\$ 105.37	A323083206	\$ 129.82
2" x 1/2"	4	16	A303083208	\$ 105.37	A323083208	\$ 129.82
2" x 3/4"	4	16	A303083212	\$ 105.37	A323083212	\$ 129.82
2" x 1"	4	16	A303083216	\$ 105.37	A323083216	\$ 129.82
2" x 1 1/4"	4	16	A303083220	\$ 105.37	A323083220	\$ 129.82
2" x 1 1/2"	4	16	A303083224	\$ 105.37	A323083224	\$ 129.82
2 1/2" x 1/2"	1	18	A303084008	\$ 225.89	A323084008	\$ 281.63
2 1/2" x 3/4"	1	18	A303084012	\$ 225.89	A323084012	\$ 281.63
2 1/2" x 1"	1	18	A303084016	\$ 225.89	A323084016	\$ 281.63
2 1/2" x 1-1/4"	1	18	A303084020	\$ 225.89	A323084020	\$ 281.63
2 1/2" x 1-1/2"	1	18	A303084024	\$ 225.89	A323084024	\$ 281.63
2 1/2" x 2"	1	18	A303084032	\$ 225.89	A323084032	\$ 281.63
3" x 1"	1	12	A303084816	\$ 321.70	A323084816	\$ 383.17
3" x 1-1/4"	1	12	A303084820	\$ 321.70	A323084820	\$ 383.17
3" x 1-1/2"	1	12	A303084824	\$ 321.70	A323084824	\$ 383.17
3" x 2"	1	12	A303084832	\$ 321.70	A323084832	\$ 383.17
3" x 2 1/2"	1	12	A303084840	\$ 321.70	A323084840	\$ 383.17
4" x 2"	1	4	A303086432	\$ 532.86	A323086432	\$ 635.32
4" x 2 1/2"	1	4	A303086440	\$ 532.86	A323086440	\$ 635.32
4" x 3"	1	4	A303086448	\$ 532.86	A323086448	\$ 635.32



150lb Stainless Steel Cast Fittings - SSC-0522

316 Hex Socket Plugs



Size	Inner Carton	Master Case	316 Item Number	316 List Price
1/16"	500	2000	A3350501	\$ 11.89
1/8"	400	1600	A3350502	\$ 11.89
1/4"	300	1200	A3350504	\$ 15.17
3/8"	200	800	A3350506	\$ 13.91
1/2"	125	50	A3350508	\$ 22.14
3/4"	60	240	A3350512	\$ 48.98
1"	40	160	A3350516	\$ 80.93
1-1/4"	-	120	A3350520	\$ 151.20
1-1/2"	-	96	A3350524	\$ 244.99
2"	-	36	A3350532	\$ 372.31

316 Hose Barbs



Size	Inner Carton	Master Case	316 Item Number	316 List Price
1/4"	100	400	A3284004	\$ 16.28
3/8"	80	320	A3284006	\$ 20.26
1/2"	30	120	A3284008	\$ 27.37
3/4"	16	64	A3284012	\$ 37.00
1"	16	64	A3284016	\$ 55.94
1-1/4"	14	28	A3284020	\$ 83.90
1-1/2"	6	24	A3284024	\$ 125.85
2"	6	12	A3284032	\$ 154.93
2-1/2"	1	12	A3284040	\$ 232.38
3"	1	4	A3284048	\$ 465.23
4"	2	4	A3284064	\$ 697.86

MSI 150lb Stainless Cast Fittings are fully-traceable, conform to AISI 304/316 ; Threads conform to ASME B1.20.1
SSP114 Fittings also available / msi-products.com Illinois / Texas



MSI TERMS & CONDITIONS

TERMS:

Net 30 days for all invoices. Discounts may apply. Invoices must be paid within 30 days from invoice date unless otherwise agreed upon.

FREIGHT ALLOWANCE:

F.O.B. Shipping Point. We prepay and allow freight to destinations within the continental United States on shipments of \$ 2500.00 or more. All MSI Products are combinable within the \$ 2500.00 freight allowance with exceptions of full lengths of any pipe or tubing of any material.

UPS AND FEDEX:

Orders are subject to a \$2.50 per package handling charge.

MINIMUM ORDER:

No order for merchandise will be rendered for less than a minimum charge of \$ 100.00 net.

PRICES:

All prices contained within are subject to change without notice.

RETURNED GOODS:

Absolutely no material may be returned without our express written permission and return authorization number. Any material that is authorized to be returned may be subject to a minimum handling charge.

DEFECTIVE MATERIAL:

Any material that proves defective will be replaced at no charge. Our sole responsibility is limited to the actual replacement of the material involved. We accept no responsibility for labor or kindred claims.

ACCURACY:

MSI strives for 100% accuracy on all our price list and discount quotations. However the list prices in our catalog shall prevail at all times. We therefore reserve the right to correct any errors resulting from such quotations. We also reserve the right to change quantities to standard packaging on common items.